

MLTI MacBook Hard Drive Upgrade

Installing a new hard drive in your MLTI MacBook is relatively easy to perform and only requires a coin, small phillips and T8 Torx screwdriver for tools.

Caution: Static electricity can damage sensitive electrical components unless you take precautions. Ground yourself first by touching metal or use an anti-static strap/mat. Always handle components by edges to avoid touching connectors.

1. Turn the computer off and flip it upside down.
2. Use a coin to rotate the battery locking screw and loosen and remove the battery. (Figure 1)
3. Unscrew the three Phillips screws in the battery compartment. (Figure 2)
4. Remove the L-shaped memory cover from the battery compartment. (Figure 3)
5. Pull on the Plastic tab attached to the hard drive to slide it out of the computer. (Figure 4)
6. Remove the silver metal shield by unscrewing the four T-8 Torx screws on the sides of the hard drive. (Figure 5)
NOTE: Two of these screws have smaller heads and should be on the connector side of the hard drive.
7. Lift the silver metal shield off the hard drive. Transfer this silver shield to your new hard drive with the rectangular notch opposite the pull tab and the hard drive connector showing in this notch. (Figure 6)
8. Attach the silver metal shield to the new drive with the four T-8 Torx screws. Slide the new hard drive back into the MacBook until fully seated, tuck in the pull tab and reassemble the MacBook.



Figure 1 - Battery lock



Figure 2 - Remove three screws



Figure 3 - Remove L-shape cover



Figure 4 - Pull the plastic tab to remove HD

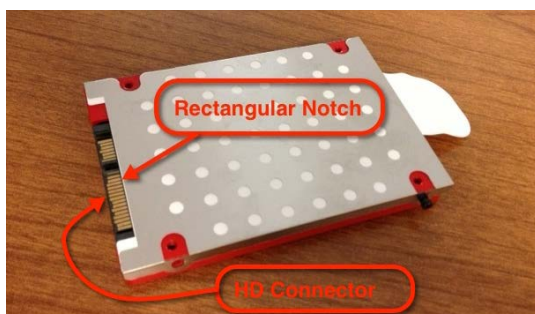


Figure 6 - Rectangular notch and HD connector

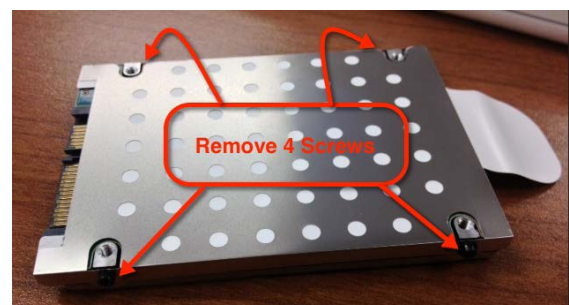


Figure 5 - Remove four T-8 Screws